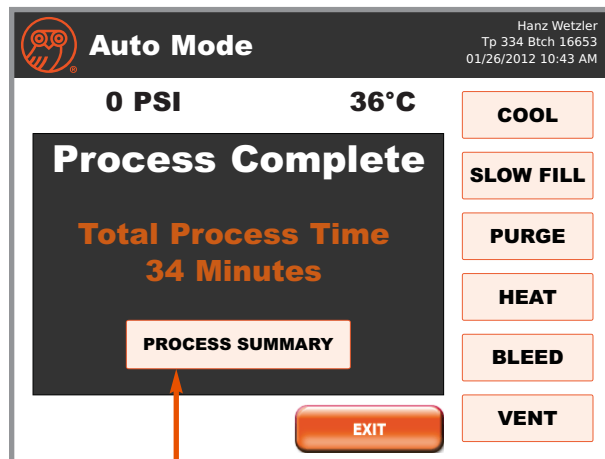
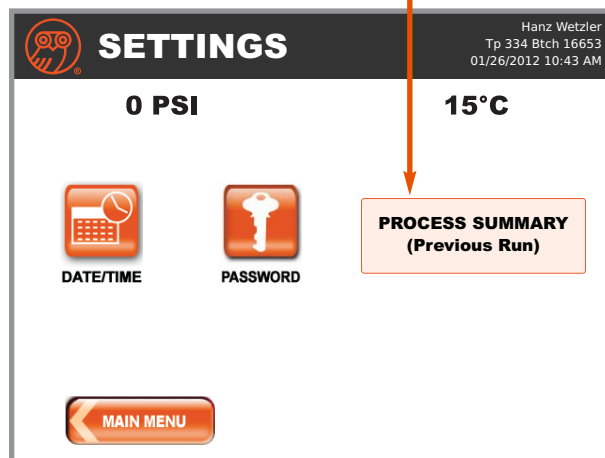


'Process Summary' Data Run Review

Upon process completion, the "Process Summary" is available from "Process Complete" screen or from the "Settings" screen.



PROCESS SUMMARY button



"Process Summary" displays Process Summary.

You may use the 'NEXT' & 'BACK' buttons to navigate the "Process Summary" screen

STASIS Mode Process Summary			
User: Hanz Wetzler		Sample: Tp 334 Btch	
Process Started:	08/28/2017 02:34 PM		
Process Completed:	08/29/2017 06:20 AM		
Total Process Time: 15 Hours 45 Minutes			
Slow FILL	90 s	FILL	150 s
PURGE	300 s	Post-PURGE	90 s
CP	120 s	BLEED	550 PSI
CP PRESSURE	1130 PSI	CP Temp.	37 °C
CP SYMBOL	36 °C	CP OFF	38 °C
COOL CUT OFF	3 °C	VENT CUT OFF	5 PSI
STASIS CYCLE	3	STASIS TIME	300 m
STASIS PURGE	60 s	Page 1 of 7	
			NEXT

Press "NEXT" to navigate the summary

System Mode	Temp(°C)	Pres (PSI)	Time (M:S)
STAND BY	36	0	
COOL	1	0	01:09
BEGIN SLOW FILL	-8	0	
SLOW FILL	-2	831	
FILL	1	879	
PURGE	-5	878	
Post-PURGE	0	873	
STASIS #1			
@ 30 MINS	21	1141	
@ 60 MINS	23	1264	
@ 90 MINS	23	1254	
@ 120 MINS	24	1211	
@ 150 MINS	24	1215	
Page 2 of 7			
		EXIT	BACK
			NEXT

Press "EXIT" button to return to the Main Menu

Press "BACK" or "NEXT" to navigate the summary

System Mode	Temp(°C)	Pres (PSI)	Time (M:S)
CP			
@ 1 MINS	38	1420	
@ the end	36	1405	
BLEED			
@ 1 MINS	36	1111	
@ 2 MINS	40	1058	
@ 3 MINS	38	936	
@ 4 MINS	36	823	
@ 5 MINS	36	761	
@ 6 MINS	39	594	06:42
VENT	39	548	02:59
PROCESS COMPLETE	36	3	
Page 7 of 7			
		EXIT	BACK